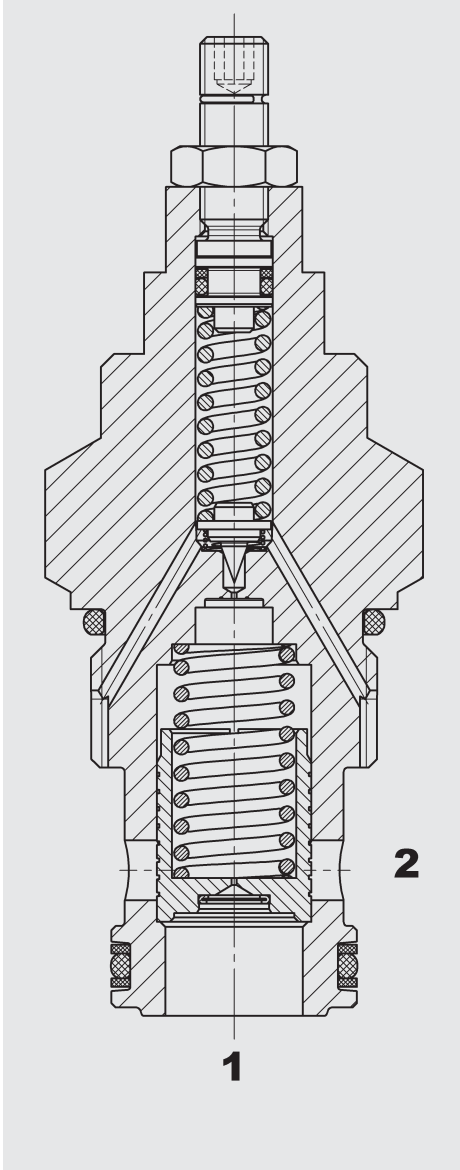


FUNCTION



The DB16P is a pilot-operated pressure relief valve. If pressure at port 1 exceeds the pressure setting the pilot poppet opens, creating a small flow across the orifice in the main spool. The pressure drop over the orifice lifts the main spool against a light spring, opening a connection from port 1 to port 2.

Pressure Relief Valve SAE 16-Cartridge – 350 bar

DB16P-01

Spool Type - Pilot Operated

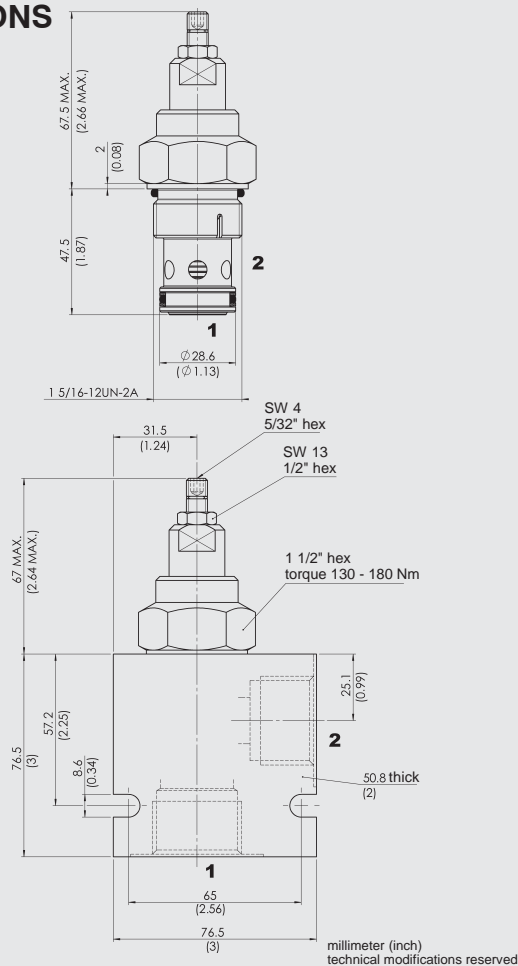
FEATURES

- All surfaces zinc-plated and corrosion proof
- All valve parts made of high-strength steel with hardened and ground components to ensure minimal wear and to extend service life
- Rigid design using one-piece body minimizes the effect of eccentricity and maximizes reliability
- Excellent stability throughout flow range
- Low pressure drop by CFD optimized flow-path
- Screen protected measuring orifice enhances safety
- Optional spring ranges up to 345 bar
- Adjustable across entire pressure range
- Quick response
- Compact design

SPECIFICATIONS

Operating pressure:	350 bar
Nominal flow:	300 l/min
Operating pressure ranges:	up to 35 bar up to 60 bar up to 125 bar up to 230 bar up to 345 bar
Internal leakage:	less than 1 l/min at 350 bar
Media operating temperature range:	-20 °C to +120 °C
Ambient temperature range:	-20 °C to +80 °C
Fluids:	Mineral-based or synthetics with lubricating properties
Viscosity:	7.4 to 420 cSt
Filtration:	Class 21/19/16 according to ISO 4406 or cleaner
Installation:	No orientation restrictions
Material:	Valve body: carbon steel Spool: carbon steel Seals: NBR (standard) FKM (optional)
Cavity:	FC16-2
Weight:	465 g

DIMENSIONS



MODEL CODE

DB16P-01 - C - N - 180 V 100

Basic Model

Body and Ports*

C = Cartridge only
SB8 = 1 BSP ports, steel body
SS16 = SAE-16 ports, steel body
AB8 = 1 BSP ports, aluminium body
AS16 = SAE-16 ports, aluminium body

Seals

N = NBR
V = FKM

Spring range

050 = up to 35 bar
090 = up to 60 bar
180 = up to 125 bar
330 = up to 230 bar
500 = up to 345 bar

Adjustment option

V = Allen head (HEX 5/32")
H = Knob adjustment
F = Factory preset, non adjustable
K = Allen head (HEX 5/32") with cover cap

Setting

Model code = desired psi ÷ 10

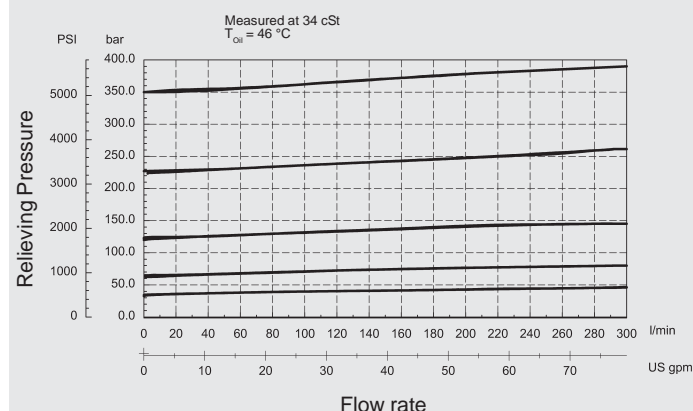
Standard models

Model code	Material no.
DB16P-01-C-N-090V	3010799
DB16P-01-C-N-330V	3010800
DB16P-01-C-N-500V	3010794

* Standard Line Bodies

Code	Part No	Material	Ports	Pressure
FH162-SB8	3032496	Steel, zinc-plated	1 BSP	420 bar
FH162-SS16	3032655	Steel, zinc-plated	SAE-16	420 bar
FH162-AB8	3037193	Aluminium, clear anodized	1 BSP	245 bar
FH162-AS16	3037195	Aluminium, clear anodized	SAE-16	245 bar

PERFORMANCE

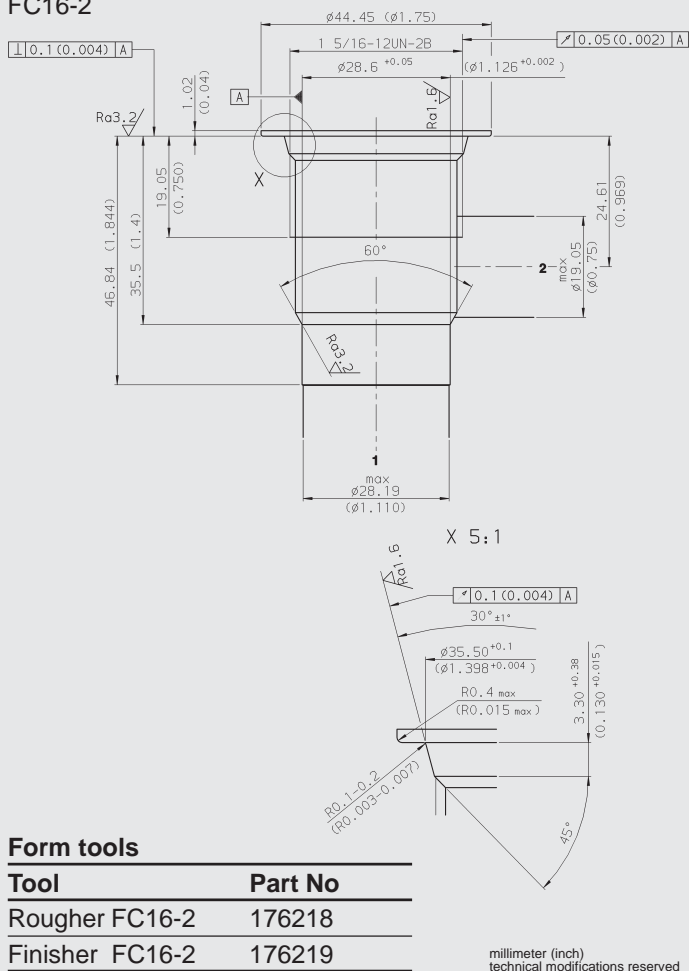


NOTE

The information in this brochure relates to the operating conditions and applications described.
For applications or operating conditions not described, please contact the relevant technical department.
Subject to technical modifications.

CAVITY

FC16-2



Form tools

Tool	Part No
Rougher FC16-2	176218
Finisher FC16-2	176219

millimeter (inch)
technical modifications reserved

HYDACFluidtechnik GmbH
Justus-von-Liebig-Str.
D-66280 Sulzbach/Saar
Tel: 0 68 97 /509-01
Telefax: 0 68 97 /509-598
E-Mail: flutec@hydac.com